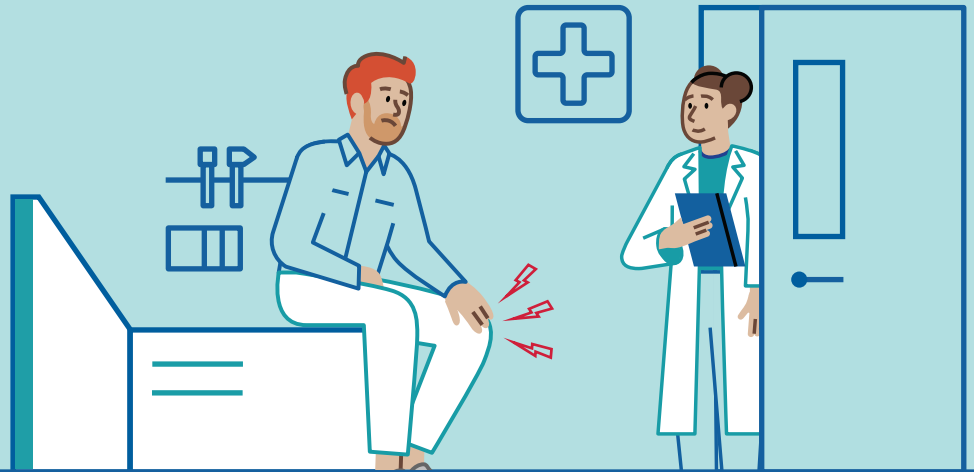


Easier access to care at no cost to you



Care Complement provides access to more affordable care options by removing cost sharing for certain services, therapies, and medications

Save money on treatments that lead to a healthier you

The following services/therapies are included at \$0 member cost:

- First six acupuncture visits (20 visit limit)
- First six chiropractor visits
- First six physical therapy or occupational therapy visits
- First three sick visits and first three behavioral health visits for members aged 18 or younger
- Cardiac rehabilitation therapy
- Certain services that reduce the risk of complications from diabetes, including an annual routine eye exam, diabetic education, and nutritional counseling



*Care Complement
benefits are available
in all plans with
Care Complement
in the name.*

No member cost for chronic condition medications:

Depression

- Fluoxetine 10mg, 20mg capsules

Diabetes

- Metformin, regular release tablets

High cholesterol

- Atorvastatin tablets
- Simvastatin tablets

Heart and high blood pressure

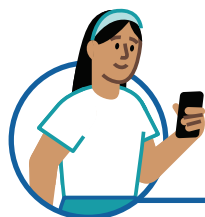
- Amlodipine besylate tablet
- Atenolol tablets
- Furosemide tablets
- Lisinopril tablets
- Losartan tablets
- Hydrochlorothiazide 25mg and 50mg tablets and 12.5mg capsules
- Metoprolol succinate SR tablets

Get expanded access to substance use disorder therapies and medication

- Free recovery coaching
- \$0 cost for the medication-assisted therapy (MAT) office visits
- \$0 cost for certain MAT prescriptions*:
 - Buprenorphine HCL-naloxone HCL sublingual film or tablet
 - Buprenorphine HCL sublingual tablet
 - Naloxone vial, tablet, or nasal spray (prescription)
 - Narcan nasal spray (prescription)
 - Vivitrol
 - Zubsolv sublingual tablet

Our care management teams offer personalized care

- Made up of nurses, doctors, pharmacists, social care managers, and behavioral health experts, our integrated care management teams deliver customized care that meets your unique needs.



For more information about plan benefits, members can log in to **Member.MGBHP.org** or call the customer service number on the back of your member ID card.

*Additional products may be available at \$0 based on your plan.

MGBHP.org

Mass General Brigham Health Plan includes Mass General Brigham Health Plan, Inc. and Mass General Brigham Health Insurance Company

14551-0824-01